



## Below Ground Oil Water Separators

- Smaller units, higher flow rates
- Low maintenance cost
- Equipment can be serviced and maintained from outside; no confined spaces
- Easily cleaned through the removable vapor-tight cover(s)
- No moving parts or consumables
- No power consumption
- No chemicals or absorbent mesh packs to remove, replace, or dispose



Hydro Quip's Below Ground Oil Water Separators are designed for industries that need to prevent contaminated runoff and spills from getting into public treatment plants and natural waterways.

Over the years, SPCC (Spill Prevention Control and Countermeasure) and NPDES (National Pollutant Discharge Elimination System) have regulated discharges from their point sources – and have become more stringent in their guidelines, permits, and fines.

Our below ground oil water separators can address:

- Diverse wastewaters
- Events that produce stormwater runoffs
- Spill containment
- Vehicle maintenance facilities and washing operations

### DESIGN

Our oil water separators will remove solids and all free and dispersed (non-emulsified) oil droplets 30 micron or greater in size and is capable of achieving an effluent discharge of less than 5 ppm. Our design meets or exceeds API 421 guidelines and will meet more stringent military guidelines.

Our separator tanks are manufactured to UL 58 and UL 1746 Standards. Construction can be either single wall or double wall with a corrosion protection system. Sizes are available up to 4000 gpm flow rate.

For a full list of options, such as pumps, control panels, leak detection and level indicating systems, see: [www.hydroquip-inc.com/hqb](http://www.hydroquip-inc.com/hqb)

### INLET COMPARTMENT

The inlet compartment will be comprised of a non-clog diffuser to distribute the flow across the width of the separator chamber. The inlet compartment shall be of sufficient volume to effectively reduce influent suspended solids, dissipate energy and begin separation. A sludge baffle will be provided to prevent settleable solids and sediment from enter-

ing the separation chamber.

### SLUDGE CHAMBER

The sludge chamber will be located prior to the separation chamber and will provide adequate volume for the settling of any solids.

### SEPARATION CHAMBER

The oil separation chamber shall contain the appropriate coalescing media specific to your application. The media, when installed in crossflow, will help meet your SPCC and NPDES limits. It is also capable of achieving a discharge limit of 5ppm in accordance with European Standard EN 858-1.

### OIL STORAGE RESERVOIR

The waste oil storage shall be an integral part of the separator, and have a capacity of 30% of the total separator volume. The separator will also have an emergency spill capacity of 80% of the total separator volume. Oil will be stored on the surface of the water and can be pumped away when the oil water interface reaches a predetermined depth.

### CLEAN WATER CHAMBER

A clean water chamber, which allows the water to leave the separator by gravity flow through the clean water drop tube and outlet flange, will be provided.

### COATINGS

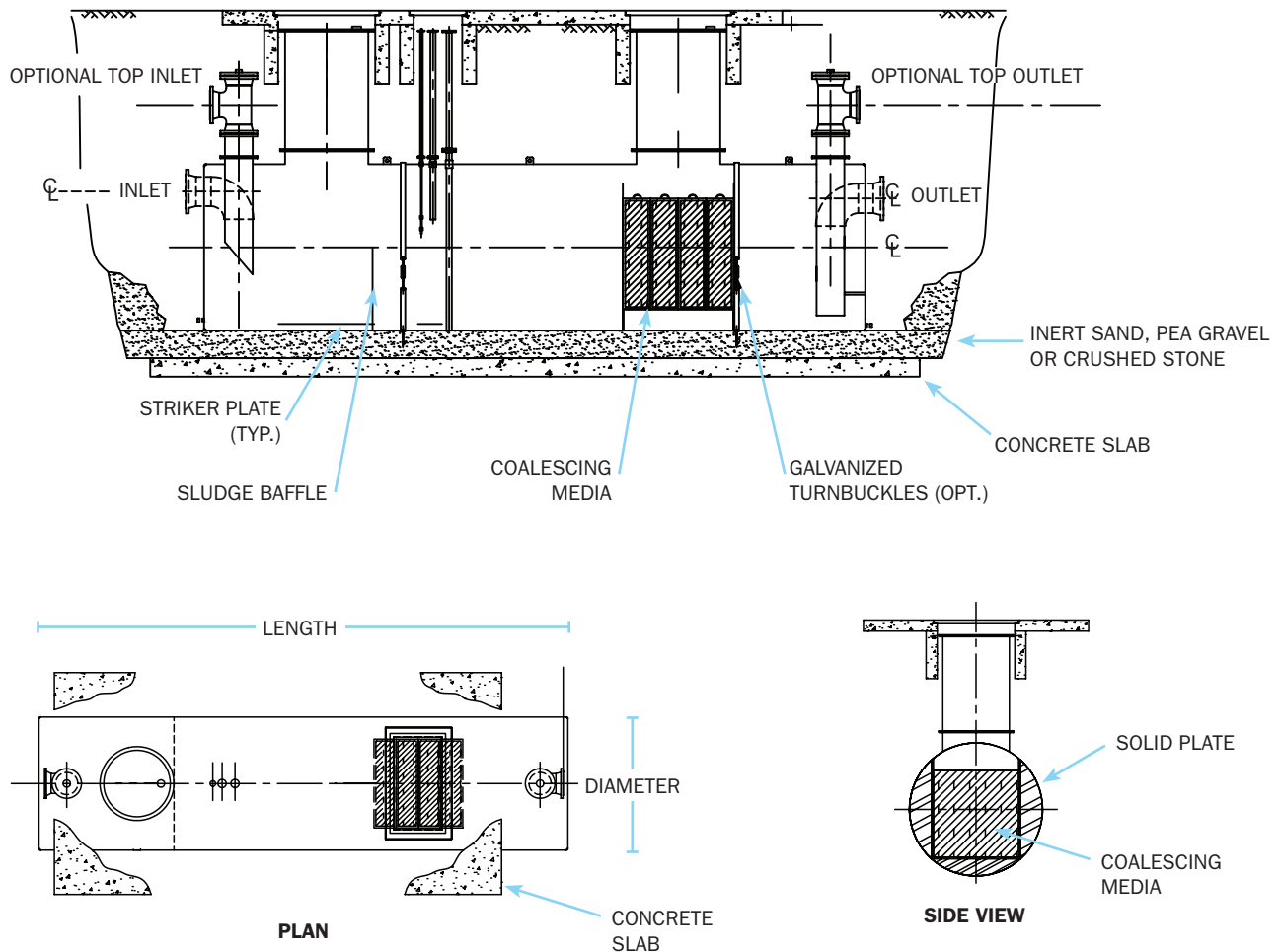
External coatings shall be in accordance with UL1746. Available coatings include FRP, Urethane and STI-P3.

### MANWAYS AND COVERS

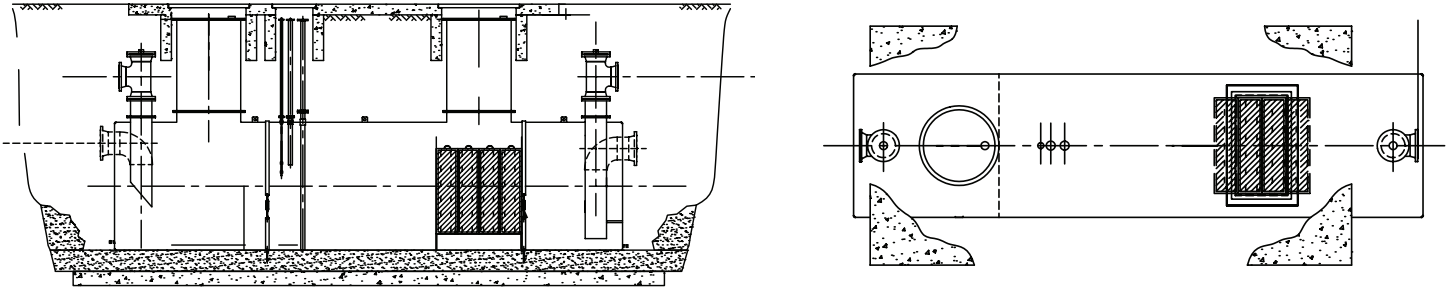
Manways and vaults will provide access into the separator. Each access way will be provided complete with extensions, bolt down cover, gaskets and bolts.

### VENTS AND HOLD DOWN STRAPS

Sufficient size vents will be provided. Optional hold down straps can be provided.



# HQB MODEL

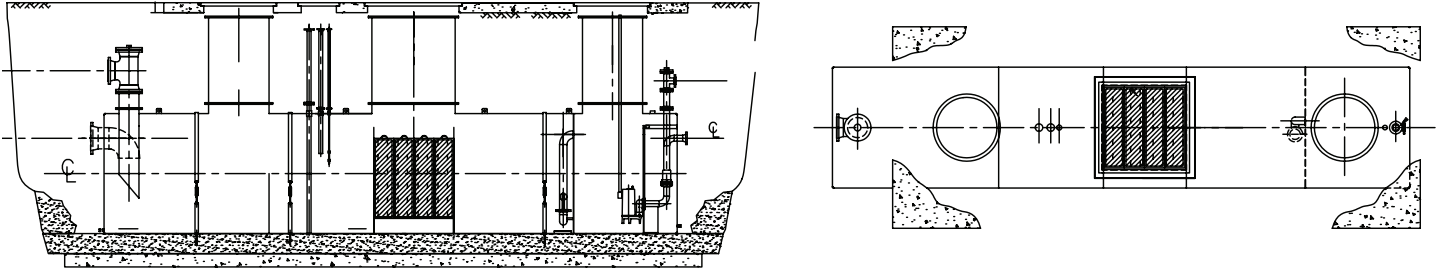


## SPECIFICATIONS

\*Dimensions are approximate and may vary depending on your application.

HQB Model	Diameter	Length	Inlet	Outlet	Flow Rate (GPM)	Tank Capacity (GAL)
HQB-342	3' 6"	6' 0"	4"	4"	30–60	350
HQB-548	4' 0"	6' 0"	4"	4"	55–110	550
HQB-1048	4' 0"	10' 9"	6"	6"	100–200	1000
HQB-2064	5' 4"	12' 0"	6"	6"	200–400	2000
HQB-3064	5' 4"	18' 0"	8"	8"	300–600	3000
HQB-4064	5' 4"	24' 0"	8"	8"	400–800	4000
HQB-5072	6' 0"	23' 10"	10"	10"	500–1000	5000
HQB-6072	6' 0"	28' 8"	10"	10"	600–1200	6000
HQB-7096	8' 0"	18' 8"	10"	10"	700–1400	7000
HQB-8096	8' 0"	21' 6"	12"	12"	800–1600	8000
HQB-9096	8' 0"	24' 0"	12"	12"	900–1800	9000
HQB-10096	8' 0"	26' 8"	12"	12"	1000–2000	10000
HQB-12096	8' 0"	32' 0"	12"	12"	1200–2400	12000
HQB-15120	10' 0"	25' 6"	14"	14"	1500–3000	15000
HQB-20120	10' 0"	34' 0"	18"	18"	2000–4000	20000

# HQBP MODEL WITH EFFLUENT PUMP OUT CHAMBER

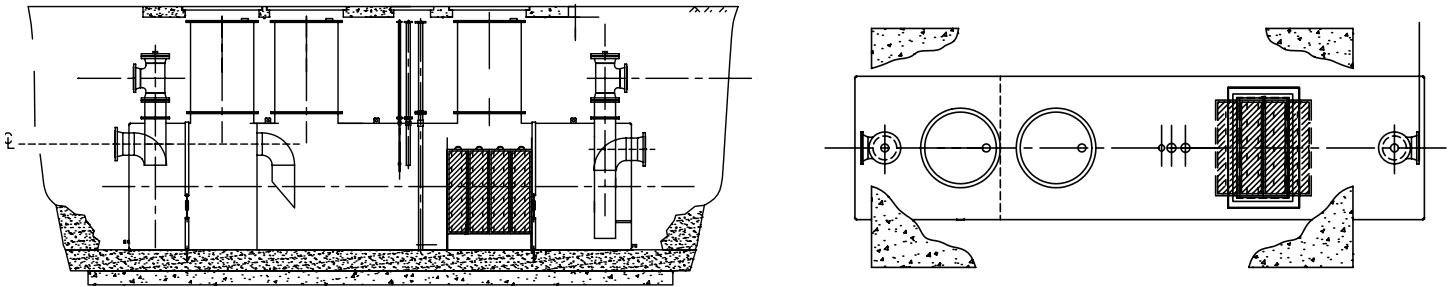


## SPECIFICATIONS

\*Dimensions are approximate and may vary depending on your application.

HQBP Model	Diameter	Length	Inlet	Outlet	Flow Rate (GPM)	Tank Capacity (GAL)
HQBP-342	3' 6"	7' 0"	4"	4"	30–60	350
HQBP-548	4' 0"	9' 0"	4"	4"	55–110	550
HQBP-1048	4' 0"	14' 0"	6"	6"	100–200	1000
HQBP-2064	5' 4"	15' 0"	6"	6"	200–400	2000
HQBP-3064	5' 4"	21' 4"	8"	8"	300–600	3000
HQBP-4064	5' 4"	28' 8"	8"	8"	400–800	4000
HQBP-5072	6' 0"	28' 8"	8"	8"	500–1000	5000
HQBP-6072	6' 0"	34' 0"	10"	10"	600–1200	6000
HQBP-7096	8' 0"	22' 0"	10"	10"	700–1400	7000
HQBP-8096	8' 0"	24' 6"	12"	12"	800–1600	8000
HQBP-9096	8' 0"	28' 8"	12"	12"	900–1800	9000
HQBP-10096	8' 0"	32' 0"	12"	12"	1000–2000	10000
HQBP-12096	8' 0"	38' 9"	12"	12"	1200–2400	12000
HQBP-15120	10' 0"	32' 8"	14"	14"	1500–3000	15000
HQBP-20120	10' 0"	38' 9"	18"	18"	2000–4000	20000

# HQBG MODEL WITH GRIT CHAMBER



## SPECIFICATIONS

\*Dimensions are approximate and may vary depending on your application.

HQBP Model	Diameter	Length	Inlet	Outlet	Flow Rate (GPM)	Tank Capacity (GAL)
HQBG-342	3' 6"	9' 0"	4"	4"	30-60	350
HQBG-548	4' 0"	10' 9"	4"	4"	55-110	550
HQBG-1048	4' 0"	14' 0"	6"	6"	100-200	1000
HQBG-2064	5' 4"	15' 0"	6"	6"	200-400	2000
HQBG-3064	5' 4"	21' 4"	8"	8"	300-600	3000
HQBG-4064	5' 4"	28' 8"	8"	8"	400-800	4000
HQBG-5072	6' 0"	28' 8"	8"	8"	500-1000	5000
HQBG-6072	6' 0"	34' 0"	10"	10"	600-1200	6000
HQBG-7096	8' 0"	22' 0"	10"	10"	700-1400	7000
HQBG-8096	8' 0"	24' 10"	12"	12"	800-1600	8000
HQBG-9096	8' 0"	28' 8"	12"	12"	900-1800	9000
HQBG-10096	8' 0"	32' 0"	12"	12"	1000-2000	10000
HQBG-12096	8' 0"	38' 9"	12"	12"	1200-2400	12000
HQBG-15120	10' 0"	32' 8"	14"	14"	1500-3000	15000
HQBG-20120	10' 0"	38' 9"	18"	18"	2000-4000	20000



Whether an off-the-shelf unit or customized equipment, we'll help you determine the best solution for your application and site-specific needs.

TEL: 508-399-5771

FAX: 508-399-5352

108 Pond St, Seekonk, MA 02703

hqisales@hydroquipinc.com

www.hydroquipinc.com